

**CONDITIONS
APPLYING TO
TOURNAMENTS
RUN BY
RICHMOND
RAPIDPLAYS**

CONTENTS

LAWS	4
AUTHORITIES AND SOURCES FOR THESE CONDITIONS	4
APPLICABLE LAWS OF CHESS	4
RATING	5
ECF & FIDE RATING LISTS	5
CONVERSION BETWEEN ECF AND FIDE OR NATIONAL ELO RATINGS	5
ECF & FIDE RATING of the tournament results.....	5
ENTRY TO THE TOURNAMENT	6
REGISTRATION	6
ECF MEMBERSHIP	6
FIDE IDENTIFICATION NUMBER	6
FIDE FLAG PLAYERS	7
PERSONAL DATA REQUIRED FOR ENTRY	7
RESTRICTED PAIRINGS	7
TOURNAMENT SECTIONS.....	7
UNRATED PLAYERS.....	8
REQUESTED BYES	8
WITHDRAWING FROM THE TOURNAMENT.....	8
DISABLED PLAYERS.....	9
THE TOURNAMENT	10
PAIRING SYSTEM & PAIRING SOFTWARE.....	10
DEALING WITH SMALL TOURNAMENT SECTIONS	10
INITIAL TOURNAMENT RANKING (SEEDING)	10
TIME CONTROL	11
DEFAULT TIMES, DEFAULTS AND NO SHOWS.....	11
TOURNAMENT ENTRIES AFTER PAIRINGS HAVE BEEN PUBLISHED ..	11
RE-PAIRING	11
FILLER GAMES	11
RUNNING LATE.....	12
RECORDING GAMES.....	12
DRAWS.....	13
SCORING SYSTEM.....	13
REPORTING RESULTS	13
CORRECTING ERRORS	14
DECISIONS OF THE ARBITER AND APPEALS	14
TIE-BREAKS AND PRIZES.....	15
TIE BREAKS	15
PRIZES	15
STANDARDS OF BEHAVIOUR.....	17
ANTI-CHEATING	17
CONDUCT OF THE PLAYERS	17
PRE-ARRANGED RESULTS.....	17
SCORE BOOKS.....	18
CONDUCT OF SPECTATORS.....	18

SUSPENSIONS AND BANS.....	18
SPORTING & UNSPORTING BEHAVIOUR.....	18
ZERO TOLERANCE TO ABUSE	18
DISTURBING THE OPPONENT.....	18
TOURNAMENT PUBLICITY AND NOTICES.....	19
LANGUAGE	19
THE PLAYING VENUE	20
TRANSPORT & PARKING.....	20
POTENTIAL TRAFFIC DISRUPTION	20
INTERNET ACCESS	20
ACKNOWLEDGEMENT	21
MISCELLANEOUS.....	22
CATERING	22
LOST PROPERTY	22
LIABILITY.....	22
FIRST AID	22
FIRE & EMERGENCY EVACUATION.....	22
SAFEGUARDING	23
ANTI-BULLYING	23
ALCOHOL.....	23
SMOKING	23
COMPLAINTS.....	23
REFUNDS	23
COLOPHON.....	24
DOCUMENT VERSION	24
OBTAINING THIS DOCUMENT	24
CONTACT INFO.....	24
REFERENCES.....	25
ANNEX 1: ORLEANS PARK SCHOOL – MAP.....	27

Richmond Rapidplays

Tournaments held since 1995

LAWS

AUTHORITIES AND SOURCES FOR THESE CONDITIONS

Fédération Internationale des Échecs	FIDE	For the internationally agreed Laws of Chess, tournament pairing schemes, tie-breaking methods, the international rating system, etc.
English Chess Federation	ECF	For locally permitted variations to the Laws, etc., for the interface between the tournament organisers and FIDE and for the national rating system.
FIDE Arbiter's Commission	ARB	For guidance as to how the Laws of Chess are to be interpreted.
Richmond Rapidplays	RR	For running the events in a manner meeting the requirements of the authorities in the game, whilst abiding by all conditions in the let premises and the law of the land, to the satisfaction of its participants.
Richmond Junior Chess Club	RJCC	The junior chess club which initially established the Richmond Rapidplays and currently runs them.

APPLICABLE LAWS OF CHESS

The latest FIDE Laws of Chess apply in all Richmond Rapidplays events. (Ref. (1))

FIDE has made translations of the Law of Chess into various languages available. The English language version, however, remains, binding.

The ARB's detailed interpretation of the Laws will be borne in mind. (Ref. (2))

Please note that:

- For Rapid events, Appendix A applies, in particular A.4, throughout the tournament;
- For Blitz events, Appendix B applies, in particular B.2 throughout the tournament.

The latest English Chess Federation Tournament Rules apply. (Ref. (3))

The latest FIDE Fair Play Regulations apply. (Ref. (4))

The latest ECF Anti-Cheating Guidelines apply. (Ref. (5))

Richmond Rapidplays

Tournaments held since 1995

RATING

ECF & FIDE RATING LISTS

The most recent published ECF and FIDE rating lists will be used for determining eligibility for entry into rating limited tournaments and tournament sections, for rating prizes and for tournament seeding, unless otherwise advertised.

CONVERSION BETWEEN ECF AND FIDE OR NATIONAL ELO RATINGS

ECF and FIDE ratings will be converted according to the ECF's latest published formula (Ref. (6)):

- FIDE rating = $0.6 \times \text{ECF rating} + 700$ up to an ECF rating of 1750, with parity above 1750

ECF and other national Elo four-digit ratings will be treated as being at parity.

If an old three-digit ECF grade is used to estimate an ECF rating, the formula used by the ECF for its original conversion to 4-digit ratings will be used:

- ECF 4-digit rating = $7.5 \times \text{three-digit ECF grade} + 700$

ECF & FIDE RATING OF THE TOURNAMENT RESULTS

All Standard and Rapid games will be sent to the ECF for rating within the same calendar month of the tournament having finished, to ensure that the ratings are updated within the ECF cycle for monthly ratings. If the tournament finishes on the last day of the month, then this may not always be possible, in which case the submission will take place within the next monthly cycle.

The tournament/tournament sections will be registered with FIDE, unless otherwise advertised.

The games in each FIDE Rated section will be reported to the ECF International Rating Officer for FIDE Rating before the 26th of the month in which the event took place if the event ends before the 26th of the month, and otherwise within 21 days of the end of the event. (Ref. (7)) This submission will meet the reporting procedures in the FIDE Rating Regulations (Ref. (8)) and/or the FIDE Rapid and Blitz Rating Regulations (Ref. (9)), and any working practises established by the ECF IRO.

Richmond Rapidplays

Tournaments held since 1995

ENTRY TO THE TOURNAMENT

REGISTRATION

Registration should be via the online form provided by RR for the tournament. All entries must provide all the information requested on the online form, with payment of the appropriate Entry Fee. Entries received after the closing date for normal entries may incur a Late Entry Fee. Only in exceptional cases will entries or payment be accepted by other means. Please email richmond_rapidplays@hotmail.com if you need to enter by email or post or make payment by other means. If payment by cheque is requested, and accepted by the organisers, then please allow five working days for clearance.

Byes may be requested at the time of entry, as may restricted pairings for family members or members of groups travelling from abroad. Any special requirements for a disabled player should also be made at the time of entry.

The organisers reserve the right to refuse any entry without providing a reason.

ECF MEMBERSHIP

ECF Membership at a particular level is required to take part in various RR events. The reason is that if a player is not an ECF Member, then the ECF will invoice RR a Game Fee for each game that that player played. (Ref. (10))

The Membership Level requirement is:

- Standard – ECF Gold or Platinum;
- Rapid – ECF Gold or Platinum;
- Blitz – not required.

You can check your current membership status and obtain your ECF Membership Number at <https://ecf.azolve.com/MemberFinder.htm>. Players sometimes forget to renew their membership, please make sure that it is up to date.

If you are not a current ECF Member, then the simple online process for joining the ECF is explained at <https://www.englishchess.org.uk/ecf-membership-rates-and-joining-details/>.

If, nevertheless, you don't wish to join the ECF at the required level of membership, or you leave it too late to organise, then RR may nevertheless at its sole discretion, allow you to take part, subject to a surcharge sufficient to cover our additional costs.

FIDE IDENTIFICATION NUMBER

All entrants should have a FIDE Identification Number (FIN) at the time of submitting their entry for a FIDE rated tournament or section. The best way for a previously unrated player to obtain a FIN is through their National Chess Federation. If you do not know who to contact, then please get in touch and we will provide you with the appropriate contact details.

An English player may apply to the ECF for a FIN using the following form: <https://britchess.wufoo.com/forms/fide-id-request-form-2024/>

Note that if a player participates without an existing FIN, then their results will be submitted to FIDE as an English (ENG) player. Changing an existing nationality registration with FIDE is possible, but currently costs €300 or more. (Ref. (11))

Richmond Rapidplays

Tournaments held since 1995

FIDE FLAG PLAYERS

“FIDE Flag Players” are players who for various reasons (e.g. refugees, or having joined the FIDE Online Arena as a new player without an existing FIN) have been registered with FIDE without a National Chess Federation (e.g. ECF). They are shown with a nationality of “FID” on the FIDE rating database. They can play a FIDE License Fee of €60 to play over the board, or join a National Chess Federation. (Ref. (12)) A FIDE Flag Player who is licensed by FIDE to play in over the board competition is marked as “Licensed” on their FIDE rating profile. FIDE Flag Players must complete all such arrangements before their entry can be accepted.

PERSONAL DATA REQUIRED FOR ENTRY

Depending on the tournament or section, games will be submitted to the ECF for ECF Rating or to FIDE for FIDE rating, or both. To have the games rated, the ECF and FIDE need certain personal data, primarily as a means to establish the identity of the player. This data may include name, date of birth, gender and a locus, which may be either a school, a chess club or geographical area of residence. This personal data is passed on the ECF and/or FIDE, who hold it confidentially, and only make it accessible to staff involved in the processing of rating.

Established players need only provide their name and existing ECF Rating Code and FIDE Identification Number to enter, rather than their full personal data.

The Privacy Notice by which the ECF holds this personal data: (Ref. (13))

The Privacy Policy by which FIDE holds this personal data: (Ref. (14))

RESTRICTED PAIRINGS

Pairings can be excluded between family members, or members of groups travelling together from the same country to England, at the discretion of the organisers. Please make any such request known at time of entry. Restricted pairings will be published at the start of the tournament. Any such restricted pairings will not apply in the last two rounds. Pairing restrictions will be negated if others pairings are not possible, or may cause pairing problems later in the tournament.

TOURNAMENT SECTIONS

Where a tournament is divided into a number of sections, admissibility to rating restricted sections depends on ECF, FIDE and other national ratings (standard, rapid, blitz) being subject to the following restrictions:

Type of Time Control	Restriction on FIDE Rating	ECF Rating (or other National Rating)	Notes
Standard	F	E	A rapid rating notably higher than the stated restriction may still block entry to a rating limited section, at the Chief Arbiter's discretion.
Rapid	R & F	Q & E	
Blitz	B, R & F	A, Q & E	

Where F = FIDE (Standard) Rating, E = ECF (Standard) Rating or other published national rating, R = FIDE Rapid Rating, Q = ECF Rapid Rating or other published national rapid rating, B = FIDE Blitz Rating, A = ECF Blitz Rating.

The organisers reserve the right to move any player into a higher tournament section.

Richmond Rapidplays

Tournaments held since 1995

If a player wins a rating restricted section, they may be required in future to play for a period in the next higher tournament section, regardless of whether they remain qualified by rating for the section which they initially won.

UNRATED PLAYERS

Players who have neither an ECF, nor a FIDE rating, are required to provide a fair estimate of their playing strength and to disclose any existing or previous national rating or any previous ECF rating or grade.

Unrated players may only play in the lowest tournament section, if the player is clearly a genuine novice or relatively weak player.

REQUESTED BYES

A half-point bye can be requested for any two rounds, except for the last two. The request for a bye may take place at the time of entry, or at any time prior to the finish of the round preceding the requested bye. Requested byes and notified withdrawals will be published at the start of the tournament, and will be updated before the start of each successive round.

WITHDRAWING FROM THE TOURNAMENT

A player may withdraw at any point up to the closing of normal entries, with a refund of the entry fee, subject to a £5 administration fee. Withdrawal subsequent to this may forfeit the full entry fee. If you wish to withdraw during the tournament itself, please inform the Chief Arbiter prior to the finish of your last round.

Richmond Rapidplays

Tournaments held since 1995

DISABLED PLAYERS

All RR events welcome and accommodate players whatever disability they may have.

No one may refuse a pairing against a disabled player; any such refusal will be treated as a loss by default and grounds for exclusion by the Chief Arbiter.

The following standard is mandatory for all ECF rated events:

- ECF Guidelines on treatment of disabled chess players (Ref. (15)).

All RR Playing Venues are fully accessible. A key may sometimes be necessary for some wheelchair lifts, this will be made available on arrival to any player requiring it. Please make sure it is returned after use, and by the end of the day. Locations of the closest wheelchair access toilets will be made known to any players that need them.

Advice on accessible public transport can be requested, preferably with a week's notice.

All notices will be announced at the start of the tournament, or immediately before they need updating. They will also be posted at several locations throughout the playing venue. Any player may request a normally printed copy or a copy in large print of any notice.

If a player is unable either to move the pieces normally, or to press the clock or to record the game, please inform the Chief Arbiter before the start of the tournament, preferably with a week's notice. An assistant will be provided to assist and/or carry out these tasks (FIDE Laws 4.9, 6.2.6 and 8.1.6). A spouse, life partner, parent, guardian or carer will also normally be acceptable as a player's assistant, providing normal rules forbidding advice are adhered to.

The Supplement E.02.1 to the FIDE Rules regulating games involving visually handicapped players applies. (Ref. (16)) This suggests a German based vocabulary for announcing the moves between a visually handicapped player and a sighted player. We are also happy for an English based vocabulary to be used instead.

Visually handicapped players that use a Braille board, a Braille clock, and record their games with a Braille device or a tape recorder are welcome and all necessary arrangements, including seeking instructions as to correctly set the clock, etc., will be made, given a week's notice. If player needs RR to source a Braille board, etc., then a fortnight's notice is needed.

A player with a disability may be seated throughout the tournament on a board with a specific board number in a set place in the venue or in a separate room in the venue, if this provides better accessibility or accommodation. A player with an assistant will be provided with a table that can accommodate both the player and the assistant comfortably.

A player may require extra lighting at their board. If this is the case, please make this requirement known at least a day before the start of the tournament.

The chess boards normally used by RR have squares in green and white. If this might prove problematic to a player with colour blindness, then a chess board can be provided in brown and cream or in black and white, provided a week's notice is given.

Any further requests to assist a disabled player will be entertained. Please just get in touch and we will try our best to meet the requests.

Richmond Rapidplays

Tournaments held since 1995

THE TOURNAMENT

PAIRING SYSTEM & PAIRING SOFTWARE

Pairing in RR events run as Swisses will apply the method specified by the latest FIDE (Dutch) System (Refs. (17), (18), (19)).

Pairing in RR events run as Round Robins will be according to the appropriate Berger table (Ref. (20)), adjusted as necessary for double-round events.

The tournament will be managed using the latest version of the Swiss-Manager software program (Ref. (21)), using the latest version of the JaVaFo pairing engine (Ref. (22)).

In the event of a technical issue preventing use of Swiss-Manager (e.g. power failure), then fallback will be to manual pairing, using pairing boards, pairing cards and wall charts.

DEALING WITH SMALL TOURNAMENT SECTIONS

If the numbers participating in a tournament section are too low to be viable, then RR will seek to remedy that in either of two ways:

- Running a section advertised as a Swiss as a Round Robin instead;
- Merging sections.

The two options would be offered in consultation with the players. However, if there should be unrated players in the small section, then FIDE rating regulations would need to be consulted, as they may preclude the option of running a Round Robin.

Possibilities for a Round Robin include:

- 5 or 6 round Swiss of 4 players run as a Double Round Robin of 3 rounds;
- 5 or 6 round Swiss of 5 or 6 players run as a Round Robin of 5 rounds;
- 6 or 7 round Swiss of 7 or 8 players run as a Round Robin of 7 rounds.

A tournament section may only be merged with a section immediately higher or lower in terms of rating restriction. It will always be preferred to merge FIDE rated sections with other FIDE rated sections. If, however, a FIDE rated section must be merged with a section initially advertised as non-FIDE rated, then the combined section will be FIDE rated, and any extra costs associated with the FIDE rating of the section will be met solely by RR.

INITIAL TOURNAMENT RANKING (SEEDING)

Initial tournament ranking will use ratings in the following order of priority:

Type of Time Control		Priority of ratings used for initial ranking
Standard		FE
Rapid	FIDE rated section	RQFE
Rapid	Non-FIDE rated section	QREF
Blitz	FIDE rated section	BARQFE
Blitz	Non-FIDE rated section	ABQREF

Where F = FIDE (Standard) Rating, E = converted ECF (Standard) Rating or other published national rating, R = FIDE Rapid Rating, Q = ECF Rapid Rating or other published national rapid rating, B = FIDE Blitz Rating, A = ECF Blitz Rating.

Richmond Rapidplays

Tournaments held since 1995

TIME CONTROL

Only time controls with increments from the start of the game will be used in all RR events.

Please note that none of the following legacy forms of time control will apply:

- Quick-play finish rules (FIDE Laws Appendix E Guidelines III);
- Adjournments (FIDE Laws Appendix E Guidelines I);
- Adjudications (ECF Tournament Rules Section D 3).

DEFAULT TIMES, DEFAULTS AND NO SHOWS

FIDE Law 6.7.1 applies. If a player does not turn up by a specified default time after the start¹ of the round, then that player will lose the game by default.

For the purposes of determining whether a player has defaulted or not, the actual start time is used, rather than the advertised time, in the case that the round started late. (Ref. (2) – boxed annotation to FIDE Law 6.7.1)

If not otherwise advertised:

- For standard events, the default time is 30 minutes;
- For rapid events, the default time is 10 minutes;
- For blitz events, the default time is the entire initial time allotted to the player.

A player who defaults a game may be excluded from the remainder of the tournament. If the player should nevertheless subsequently turn up, they may be reincluded at the discretion of the Chief Arbiter.

TOURNAMENT ENTRIES AFTER PAIRINGS HAVE BEEN PUBLISHED

At the sole discretion of the Chief Arbiter, players may be permitted to enter the tournament after first round pairings have been published. Such players will be awarded zero points for each round that they have missed. If a round is being played at the point that they seek entry to the tournament, then they may be paired against any other player in the same section who has also entered after the pairings have been published; clock times may be reduced to guarantee that the scheduling of the tournament will not be adversely affected; the game will otherwise be treated as a normal game in the tournament. Should any such players remain unpaired, then they will be available for Re-pairing or for a Filler Game, as specified below.

RE-PAIRING

A player whose opponent does not arrive before the default time may be offered the choice to take a default win, or to accept a re-pairing against someone in the same tournament section, if possible. Clock times for re-paired games may be reduced to maintain tournament scheduling; in all other regards, re-paired games are treated as normal tournament games.

FILLER GAMES

Should a player have a bye, or should a re-pairing against someone in the same section not be possible, then they may be offered a game against a player from a different section. Whether the player accepts this Filler Game or not, they will keep their bye or default win. Such Filler Games will count for ECF Rating, but will not otherwise count for the tournament.

Finally, a player may be offered a game against a Filler Player who has not entered the tournament, but is available to play. Should a Filler Player be eligible to take part in the tournament section

¹ The actual start time is used, rather than the advertised time, if the round started late.

Richmond Rapidplays

Tournaments held since 1995

concerned, then the game will be treated as a re-pairing and count normally towards the tournament. Otherwise, the player will keep his or her bye or default win and the Filler Game will count for ECF Rating, but not otherwise count towards the tournament.

A Filler Player will not be presented with a tournament entry fee, even should they then decide to take part in the rest of the tournament.

Clock times for Filler Games may be reduced to guarantee that the scheduling of the tournament will not be adversely affected.

RUNNING LATE

If the tournament is running late, time controls and the breaks between rounds can be shortened.

RR time controls will never be faster than (Ref. (8)):

	Rating	Minimum Time Control	Notes
Standard	No maximum	90 minutes per player plus 30 seconds per move	An increment of 30 seconds per move requires players to record throughout
	< 2400	60 minutes per player plus 30 seconds per move	
	<1800	30 minutes per player plus 30 seconds per move	
Rapid		10 minutes per player plus 5 seconds per move	Although, FIDE allows a minimum of 10 minutes per game of 60 moves, i.e. 5 minutes per player plus 5 seconds per move, RR have made the choice for the comfort of the players not to use it
Blitz		3 minutes per player plus 2 seconds per move	

The gap between the finish of the last game of the previous round and the first game of the next round will never be less than:

- standard time controls – 30 minutes;
- rapid time controls – 10 minutes;
- blitz time controls – 10 minutes.

In exceptional cases, where some games have finished very late, the players of those games will be permitted time to recover and will be allowed to start their next round games late:

- standard time controls – maximum of 20 minutes later;
- rapid time controls – maximum of 10 minutes later;
- blitz time controls – maximum of 10 minutes later.

RECORDING GAMES

In FIDE rated sections, when players record their games, they must use algebraic notation. In a non-FIDE rated section, then English Descriptive notation is acceptable.

Richmond Rapidplays

Tournaments held since 1995

DRAWS

FIDE Law 9.1.1 (sometimes known as “Sofia Rules”) applies in RR Standard events. A player may not offer or accept a draw in any game in which fewer than 30 moves have been played, without the permission of the arbiter.

FIDE Law 9.1.1 does not apply in RR Rapid or Blitz events. A player may offer or accept a draw at any time without the permission of the arbiter.

FIDE Law 5.2.3 applies, however in all cases. A game cannot be drawn unless each player has played at least one move.

Breaching these regulations may result in the game being scored 0 – 0, a loss for both players.

SCORING SYSTEM

Unless otherwise advertised, the scoring system will be:

- 1 point for a win;
- ½ point for a draw;
- 0 points for a loss.

REPORTING RESULTS


Please set up the pieces after finishing. Report the result and leave the Playing Area quietly.

If the tournament is played to a Standard time control, then duplicate scoresheets will be provided for each player before the start of each round. On completion of their game, players must sign their own and their opponent’s scoresheets, and leave the front copies in the box for the appropriate section of the tournament at the control desk of the Chief Arbiter.

If the tournament is played to a Rapid or Blitz time control, then a Result Slip will be left on each board before the start of each round. The winner of each game, or the player of the White pieces in a drawn game, is then responsible for completing the Result Slip and leaving it in the box for the appropriate section of the tournament at the control desk of the Chief Arbiter.

A sample Result Slip is illustrated below:

Date:	<i>RICHMOND RAPIDPLAYS</i>
Section:	Round: Board:
White:	Score:
Black:	Score:
SCORE: Win - 1; Draw - ½; Loss - 0	
Win by Default should be scored +	
Loss by Default should be scored –	
The WINNER should hand this into the Tournament Controller IMMEDIATELY the game has finished. If the game is DRAWN, the player of the WHITE pieces, please. Please SET UP your pieces before you leave the board.	



Richmond Rapidplays

Tournaments held since 1995

CORRECTING ERRORS

It is important that players check lists as soon as they are published, in order to catch any errors as quickly as possible. All (perceived) errors should be reported to the Chief Arbiter. Do, please, try to remain calm and polite. Things do sometimes go amiss, but we will correct all genuine errors.

- Entry Lists – these may omit players, have them entered in the wrong section, missed their eligibility for a rating or other prize, spelt their name incorrectly, confused them with another player with the same name, assigned them an incorrect FIN or ECF rating code, have an incorrect rating assigned, assigned an incorrect locus (club or school), etc.;
- Lists of withdrawn players – if your name is on the list and you are present at the tournament, then this clearly needs to be addressed urgently;
- Lists of requested byes – these may have omitted a bye, neglected to remove the bye if it had been cancelled, or assigned it to the wrong round;
- Lists of restricted pairings may omit an agreed restricted pairing;
- Round results may have the wrong result, you may have played with reversed colours, you may have played a different player (particularly if re-paired), a result may have been a result by default rather than a played game, or vice-versa, a bye may have been assigned the wrong score value, the scores or tie-breaks may not seem to tally;
- Prize Lists an error in the prize list perhaps goes back to a result being wrongly recorded, possibly in an earlier round, or possibly to an incorrect tie-break calculation;
- Game PGNs – all assistance in correctly entering game scores will be gratefully received!

Please note that this list deliberately does not include errors in pairings. It is possible that a mistake has been made in the pairings, but we will not change published pairings unless two players are to play each other, already having played earlier in the tournament. This is in accord with FIDE's General handling rules for Swiss Tournaments:

- C.04.2 D.10. Once published, the pairings shall not be changed unless they are found to violate C.04.1.b (Two players shall not play against each other more than once).

Note also that for an error in the initial rankings (e.g. a rating was incorrectly entered), the initial ranking list can be resorted up to but not after the fourth round (FIDE Handbook C.04.2 B.3)

There will be always be a guaranteed minimum period between publication of results for the previous round and the pairings for the next round, in which players have the opportunity to check and communicate any errors to the arbiters. The minimum period will be:

- in tournaments played to Blitz and Rapid time controls, five minutes
- in tournaments played to Standard time controls, twenty minutes

DECISIONS OF THE ARBITER AND APPEALS

Unless otherwise advertised, in RR events run to Rapid or Blitz time controls, all decisions of the Chief Arbiter will be binding.

However, unless otherwise advertised, in RR events run to Standard time controls, a **Players Panel** will be selected, from which an **Appeals Committee** can be formed to hear any appeal against any arbiter's decision. The Players Panel will consist of five players chosen by the Chief Arbiter. The Players Panel will be published before the start of the tournament. Any appeal must be received in writing by the Chief Arbiter within 30 minutes of the decision to be appealed having been taken, and must be accompanied by a bond of £30. The bond will be returned on a successful appeal, or if the Appeals Committee decides so. An Appeals Committee will consist of an arbiter, who will chair the committee, plus two members of the Players Panel, all independent of the original dispute and decision.

Richmond Rapidplays

Tournaments held since 1995

TIE-BREAKS AND PRIZES

TIE BREAKS

Tie-breaks will be calculated in compliance with C.07 Tie-break regulations, and have been chosen with the advice given in C.02.13.16 Recommended Tie-Break Systems in mind. (Ref. (23)).

Software support from Swiss-Manager will be used as appropriate.

The following tie-break method is currently employed in tournaments/tournament sections where advertised:

- Buchholz Cut-1 – the sum of the scores of each of the opponents of a player reduced by the lowest score of the opponents.

PRIZES

A full prize list for the tournament will be published at the venue and online as soon as possible at the end of the tournament. Please be patient, it may take us a few minutes to complete, but we would like to get in right, even if you want to dash off home!

No player can win more than one prize, unless otherwise advertised.

No one who scores zero points through played games is eligible for a prize.

If for whatever reason, a player was given a free or reduced entry, the fee or the remainder of the fee may be taken from that player's prize money, at the discretion of the Organiser.

Any applicable tie-breaks will be advertised in the entry form, otherwise prizes will be shared between tied players.

Prizes are guaranteed and will be paid within one week of the tournament being completed. Prizes are paid by bank transfer. Prize-winners will need to provide RR with the following bank details: account name, sort code, account number. Payment in cash will be made to foreign players for whom bank transfer fees apply, otherwise requests for payment in cash, by cheque or Paypal are solely at our discretion.

Eligibility for a rating prize depends on ECF ratings (standard and rapid), FIDE ratings and other national ratings (standard, rapid, blitz) being subject to the following restrictions:

Type of Time Control	Restriction on FIDE Rating	ECF Rating (or other National Rating)	Notes
Standard	F	E	A rapid rating notably higher than the stated restriction may still make a player ineligible for a rating prize, at the Chief Arbiter's discretion.
Rapid	R & F	Q & E	
Blitz	B, R & F	B, Q & E	

Where F = FIDE (Standard) Rating, E = converted ECF (Standard) rating or other published national rating, R = FIDE Rapid Rating, Q = converted ECF Rapid Rating or other published national rapid rating, B = FIDE Blitz Rating, A = ECF Blitz Rating.

All prizes which are closed to a particular pool of players (e.g. Rating Prizes, Female Prizes, prizes for members of Richmond Junior Chess Club, etc.) depend on their being at least one more eligible player than the number of prizes. If the number of eligible players equals the number of prizes, then the

Richmond Rapidplays

Tournaments held since 1995

number of such prizes will be reduced by one. For instance if there are two ratings prizes offered in a particular rating band, and only two eligible players participate, then the number of rating prizes in that category will be reduced to one only.

Staff of Richmond Junior Chess Club are not eligible for a prize for RJCC members. If there is a prize or prizes open to former members of Richmond Junior Chess Club, then staff are, however, eligible for such a prize.

If sections were merged in a tournament, then those who entered the lower of the merged sections remain eligible for the prizes that were initially advertised for their tournament section; they will be also be eligible for the prizes of the upper section. Those who entered the upper section will not be eligible for the prizes of the lower merged section, even if they would qualify by rating.

Richmond Rapidplays

Tournaments held since 1995

STANDARDS OF BEHAVIOUR

ANTI-CHEATING

The approach at Richmond Rapidplays can be characterised as unobtrusive.

Except for the use of hand-scanners, we have no current intention of using closed circuit cameras or any of the other technical means proposed in ACG. Nor do we intend to use the FIDE Internet-Based Game Screening Tool as a matter of course. Should we at some point in the future choose, or be required to use, such means, then we would aim to advertise this a quarter in advance.

Hand scanners will be used to search for hidden electronic computing or communications devices. A number of randomly selected players will be scanned in each section at the start of each of the rounds. Scanners may be also used at the end of a game at the discretion of the Chief Arbiter. They will never be used during games, unless there is a complaint, evidence, or a strong suspicion of cheating.

Nevertheless, we do recognise the potential for engine-based cheating or contact with third parties, and our staff will remain vigilant.

Should a player wish to make a complaint regarding suspected cheating, they will be informed by the tournament's Chief Arbiter of the potential consequences attached to false claims, and then the complainant will be invited to complete a copy of the ECF's Post Tournament Complaint Form. (Ref. (24))

The tournament's Chief Arbiter will then investigate the complaint. If the complaint appears to be well-founded, or an arbiter believes personally to have observed cheating, then an accused player who is unable to give good account for his or her behaviour will be expelled from the tournament and the complaint will be forwarded to the ECF for advice, further action, sanctions and contact with FIDE.

CONDUCT OF THE PLAYERS

FIDE Law 11.3.2.1 applies. Electronic devices may be stored during play in a player's bag in the Playing Venue, or alternatively on a desk in plain sight of all or in a box as specified by the arbiter at the start of the tournament. Electronic devices must be switched off at all times during playing sessions, subject to loss of the game being played.

FIDE Law 11.3.2.2 applies, with the proviso that a first breach may be met with a warning and a requirement to meet the provisions of FIDE Law 11.3.2.1. A subsequent breach may be met with a loss of the game being played.

FIDE Law 11.3.3 applies. However, it has never to date been enforced at RR, nor will it ever be without good reason. We do reserve the right under this Law to request a player or spectator to enter their pin code or password to allow us to examine a mobile phone, tablet, computer or other electronic device of. We also reserve the right to request a player or a spectator to turn out a pocket or a bag. This Law allows for a search of clothing, by an official of the same gender. This will never be used, without a parent or carer being present, if the player or spectator concerned is a minor. Where it is felt that a search would be justified, but cannot take place because the player concerned is a minor, then the Chief Arbiter may choose expulsion as the only workable course of action.

PRE-ARRANGED RESULTS

Pre-arrangement, or the buying and selling of points is forbidden, and shall result in all such games being awarded the score of 0 – 0. All players involved will immediately be excluded from the tournament and a written report will be made to the ECF.

Richmond Rapidplays

Tournaments held since 1995

SCORE BOOKS

In accord with FIDE Law 11.3.1, players are forbidden to consult any sources of information during their games. Due to the possibility of consulting earlier games in a score-book, their use to record games during RR events is prohibited. Only the scoresheet provided by the tournament may be used.

CONDUCT OF SPECTATORS

FIDE Law 11.2.3.3 applies. Spectators (including parents) must leave the Playing Area before the start of each round and must not return before the end of the round, without the permission of the arbiter.

FIDE Law 11.4 applies. A player who has finished his or her game is considered a spectator. Some degree of latitude may be given in requiring finished players to leave the Playing Area, however the arbiter shall nevertheless insist on this provision being met if it is considered that such spectators are causing a nuisance.

SUSPENSIONS AND BANS

No player from a National Chess Federation whose has been suspended by FIDE may take part in any FIDE rated event. Any player, or other member of the chess community, subject to a suspension or ban by the ECF, another National Chess Federation, or FIDE for Anti-Cheating, or any other violation, is forbidden not only from play, but also from entering any part of the Playing Venue.

SPORTING & UNSPORTING BEHAVIOUR

Players are required to shake hands before the start of each game and at the finish of each game, as a gesture of sporting behaviour. If a player is unable to shake hands for cultural, medical or other reasons, please inform the Chief Arbiter before the start of the event. The handshake should in such a case be replaced with another culturally appropriate gesture of sporting behaviour, such as a bow or wishing the opponent a "good game".

If you have a problem during the game, do not have an argument with your opponent. Pause the clock and stick up your hand: an arbiter will come along to sort out your issue.

If you do not wish to continue a game, you must inform your opponent of your resignation in good grace, or notify an arbiter if your opponent is not at the board. Either leaving the Playing Area and leaving the flag to fall, or sitting at the board in a hopeless position and refusing to move until the flag finally falls are unacceptable forms of conduct.

Violation of any of these norms may result in appropriate penalties under FIDE Law 12.9.

ZERO TOLERANCE TO ABUSE

Dissent towards an arbiter or other RR staff may result in expulsion from the tournament for a period determined by the Chief Arbiter. Hot-headed rows, foul or abusive language, or threats will result in expulsion from the tournament in its entirety. Violence will result in the police being called, a permanent ban from all RR events and a written report to the ECF.

DISTURBING THE OPPONENT

You must not speak with your opponent during a game, except as provided by the Laws of Chess. You must not adjust the pieces during your opponent's time. You must not make repeated draw offers, without the position on the board having undergone significant change in character. You should not eat at the board.

Violation of any of these norms may result in appropriate penalties under FIDE Law 12.9.

Richmond Rapidplays

Tournaments held since 1995

TOURNAMENT PUBLICITY AND NOTICES

RR tournaments are advertised on the ECF, FIDE and SCCU (Southern Counties Chess Union) online calendars and on the RJCC website. They are also advertised via the RR Mailchimp newsletter, on the RR Twitter and Facebook feeds, in the RJCC termly club flyer, and with advertisements in Chess magazine. Entry forms for future RR events will also be displayed during running RR events.

The entry form can be downloaded from the ECF calendar and from the RJCC website, using a link to the RJCC website given in the Mailchimp newsletters and on the social media feeds. They can also be obtained by email from richmond_rapidplays@hotmail.com.

Entries, pairings and results of the tournament will be published online and at the venue. The entry form to the tournament gives the URL to a web-page on <http://chess-results.com/> where all pairings, entries and results for each section of the tournament will be posted.

Games played in standard play tournaments will be published at the end of each day online at <http://chess-results.com/> and at the venue. On conclusion of the tournament, the games will be emailed to all the players and will be included in the next RR Mailchimp newsletter.

Prize lists will be published at the venue and via the RR Mailchimp newsletter and on the RR Twitter and Facebook feeds. All prize winners will be personally notified by email.

Other publicity channels and media may be used as time permits. Any help with this will be gratefully received.

LANGUAGE

RR events are advertised and run and the pairings and results are published in the English (UK) language. If sufficient notice is given, then it may be possible to furnish tournament entry forms, conditions and notices and publish pairings and results in other languages. What constitutes sufficient notice will depend on the language concerned.

Richmond Rapidplays

Tournaments held since 1995

THE PLAYING VENUE

The Playing Venue can be found at:

Orleans Park School
Richmond Road
TWICKENHAM
TW1 3BB

Web-site: <http://www.orleanspark.richmond.sch.uk/>

Map: <http://www.orleanspark.richmond.sch.uk/school-contacts/84019.html>

For those that use What3Words, the entrance to the main car-park is to be found at approximately [useful.enhancement.keen](#), whilst the main pedestrian entrance to the school is at: [keen.dark.reds](#).

Various Halls or Classrooms may be used for RR events. These are:

- Sports Hall/room 56 (Attenborough Building) – only for our largest events
- Gym/room 55 (Attenborough Building)
- Attenborough Hall/room 82 (upstairs in the Attenborough Building)
- Drama Studio/room 19 (classroom block to the right as you enter from the car park)
- Small Drama Studio/room 29 (classroom block to the right as you enter from the car park)
- Classrooms 46 and 47 (classroom block to the left as you enter from the car park)

These are illustrated in the map provided in Annex 2.

RR will email all participants the week before an event informing them which Hall or Classroom will be used. Signposts will be placed on the day to help participants find their way.

TRANSPORT & PARKING

The venue is about 10 minutes walking distance from either Twickenham or St. Margaret's Stations, and short bus journey or a walk of twenty-five minutes from Richmond Station. Buses stop directly outside the school, with a frequent service. Please consult the Transport for London website, <https://tfl.gov.uk/>, for the latest information.

On-site parking is available for about 80 cars; if more cars than this turn up, then additional parking will be made available under direction of school staff on some of the school's hard surfaces. Do not drive onto the hard surfaces, except under direction of the school staff, and please follow any and all instructions given.

POTENTIAL TRAFFIC DISRUPTION

Twickenham hosts international sporting and other events at Twickenham Stadium. On days that the stadium is in use, traffic around Twickenham can be severely disrupted. We endeavour to inform participants whenever that will affect a Richmond Rapidplays event.

INTERNET ACCESS

Wi-Fi internet access is available.

Subject to change without notice, the login details are:

- Account: Orleans_Guest
- Password: V7ePh%1Be4:p

Richmond Rapidplays

Tournaments held since 1995

ACKNOWLEDGEMENT

Richmond Rapidplays is grateful to Orleans Park School in allowing us to use their venue and for their help in organising our events. We ask everyone to respect the school's generosity, and ask everyone to keep it clean. Please ensure that any room that you use is left clean and tidy before you go home. Bins or large black bin bags will be provided in each room, and all rubbish should be disposed of in these. Liquids should not be put in the bin bags. If extra bin bags are needed, or if there are any spillages, please speak to the RR staff. All tables and chairs should be left where they were found.

Richmond Rapidplays

Tournaments held since 1995

MISCELLANEOUS

CATERING

Catering, if provided, will be courtesy of “The Regal Café”, a sandwich shop and café close to Twickenham Station. Expect sandwiches, baguettes, etc., including vegetarian options. Also crisps, sweets, fruit, hot and cold beverages. In larger events, this may be expanded with toasted sandwiches and heated panini. At small events, a buffet style display will be set-up with prices prominently displayed and an honesty box; please don't abuse it. If any participant has special dietary requirements, please let us know, and we can pass them on.

Various shops, cafés and restaurants are 5 to 10 minutes' walk away in the town centre.

IMPORTANT SAFETY NOTICE

As some children taking part have nut allergies, no nut products will be sold. Please make sure that your children do not take nuts or foods containing nuts with them to the tournament.

LOST PROPERTY

We shall endeavour to keep non-perishable lost property for three calendar months after the conclusion of the event, after which it will be disposed of in the most environmentally sound manner, which may include donation to charity or recycling. In the case of items whose ownership can be readily identified, we shall email within one calendar day, or phone, if the items are of high material value. Otherwise, we shall email a generic list to all participants within one week. Return should normally be by collection from Richmond Junior Chess Club, meeting at the school on a Saturday afternoon, contact details below. Collection from the Premises Department of the leased venue during the working week can potentially be arranged, but only in advance via RJCC. If postal delivery should be required, then all costs must be met in advance.

LIABILITY

RR accepts no responsibility for any loss, theft or accident during the tournament.

FIRST AID

A first aid kit specified as suitable by St. John Ambulance for similar events of similar size, with stock replenished as it is used or has reached its specified replacement date, will be kept at the Chief Arbiter's Desk. RR staff with suitable up-to-date First Aid training provided by St. John Ambulance will be present at every RR event. Details can be provided on request. For assistance, please ask at the Chief Arbiter's desk, where directions to the nearest open pharmacy, GP and hospital A&E department can also be obtained.

FIRE & EMERGENCY EVACUATION

RR staff with up-to-date Fire Marshall training will be present at every RR event. In the unlikely event that the venue needs to be evacuated, the trained Fire Marshalls will ensure that the evacuation is carried out safely, to a plan pre-agreed with the Premises Department of the leased venue. A brief overview of fire and emergency procedures will be given before the start of any RR event.

The Assembly Point designated by the Premises Department in the event of fire and emergency evacuation is on the field to be found behind the Attenborough Hall, as marked on the map provided in Annex 2.

Richmond Rapidplays

Tournaments held since 1995

SAFEGUARDING

The latest RJCC (Ref. (25)) and ECF (Ref. (26)) Safeguarding Policy applies in all dealing with minors.

RR staff are all subject to an Enhanced DBS check and undergo Safeguarding training.

ANTI-BULLYING

The latest RJCC (Ref. (27)) and ECF (Ref. (28)) Anti-Bullying policy applies.

ALCOHOL

No alcohol may be bought, sold or consumed in any part of the Playing Venue at any RR event, on pain of expulsion from the tournament.

If there should be occasion to celebrate a special jubilee, birthday, the presence of a VIP, or a similar event, with a glass of champagne or the equivalent, then RR will ensure that all participants are notified fully beforehand, so that they can make choices appropriate to their cultural background.

SMOKING

Regardless of any provision under FIDE Law 11.3.4, smoking is strictly forbidden in or on any part of the premises leased by RR to hold their events.

COMPLAINTS

RR always aims to please all of its players and those that come with them. Nevertheless, sometimes things do go wrong, and people may feel that they have a grievance or complaint. We aim to handle all complaints in an even-handed manner and will attempt to find a resolution that satisfies all parties. In such cases we follow the steps laid out in the RJCC Complaints Procedure. (Ref. (29)).

REFUNDS

Entry fees will be refunded in full for any lapse in our service which has led to an upheld complaint. We will also issue refunds for those who have to withdraw from a tournament up to close of normal entries, subject to a £5 administration fee. We may offer a credit note against future tournaments as an alternative to a refund, if that is mutually satisfactory. RJCC Refunds Policy (Ref. (30)).

Richmond Rapidplays

Tournaments held since 1995

COLOPHON

DOCUMENT VERSION

Version	Date	Author	Note
1.0	09/01/2020	PM	Initial version
1.1	10/01/2020	PM	
1.2	23/02/2020	PM	
1.3	23/10/2021	PM	
1.4	25/10/2021	PM	
1.5	26/10/2021	PM	
1.6	24/11/2021	PM	
1.7	20/12/2024	PM	Updated Laws of Chess to 2023; removed CAA; added ARB as authority; replaced FIDE Anti-Cheating Regulations 2014 with FIDE Fair Play Regulations 2024; updated conversion of ECF to FIDE ratings; removed Silver membership; FIDE Flag Player license status is displayed on their rating profile; use of ECF Blitz ratings; removed reference to FIDE C.02.10. Requirements on treatment of disabled chess players, as no longer seems to exist; removed reference to specific version of Swiss-Manager; updated FIDE rating limits for minimum time controls; removed virtual opponent for tie-breaks; removed Bucholz worked example; updated Orleans Park School guest WiFi code; added ECF Post Tournament Complaint Form

OBTAINING THIS DOCUMENT

This document may be obtained by:

- download from: <http://rjcc.org.uk/richmond-rapidplays-tournament-conditions>.

CONTACT INFO

Contact: Paul McKeown
Email: richmond_rapidplays@hotmail.com
Whatsapp Group: <https://chat.whatsapp.com/FmtaT4NORRBCxZXhguTm2E>
Twitter: [@rich_rapid](https://twitter.com/rich_rapid)
Facebook Page: [RichmondRapidplays](https://www.facebook.com/RichmondRapidplays)
Web: www.rjcc.org.uk/
Mobile: 07833 577451

REFERENCES

1. **FIDE**. FIDE Laws of Chess taking effect from 1 January 2023. [Online] 2023. <https://handbook.fide.com/chapter/E012023>.
2. **ARB**. FIDE Arbiters' Manual 2024. [Online] 2024. https://arbiters.fide.com/wp-content/uploads/Publications/Manual/Arbiters_Manual_2024.pdf.
3. **ECF**. English Chess Federation Tournament Rules, V03 November 2024. [Online] 2024. <https://www.englishchess.org.uk/ecf-tournament-rules/>.
4. **FIDE**. FIDE FAIR PLAY REGULATIONS. [Online] 2024. https://handbook.fide.com/files/handbook/FPL_Regulations_2024.pdf.
5. **ECF**. Anti-Cheating. [Online] 12 2019. <https://www.englishchess.org.uk/wp-content/uploads/2019/12/Anti-Cheating-Document.pdf>.
6. —. Recommended conversion of ECF to FIDE ratings. [Online] 2023. <https://www.englishchess.org.uk/recommended-conversion-of-ecf-to-fide-ratings/>.
7. —. Submit Your Event (ECF & FIDE). [Online] <https://britchess.wufoo.com/forms/submit-your-event-ecf-fide/>.
8. **FIDE**. B.02 FIDE Rating Regulations effective from 1 March 2024. [Online] 2024. <https://handbook.fide.com/chapter/B022024>.
9. —. B.02 FIDE Rapid and Blitz Rating Regulations effective from 1 March 2024. [Online] 2024. <https://handbook.fide.com/chapter/B022024>.
10. **ECF**. Membership, Pay to Play and Game Fees 2024/5. [Online] 2024. <https://www.englishchess.org.uk/membership-pay-to-play-and-game-fees-2024-25-v1/>.
11. **FIDE**. B.04. Transfer Regulations and Rules of Eligibility for Players (effective from 1 July 2018). [Online] 02 07 2018. <https://handbook.fide.com/chapter/B042018>.
12. —. B.04. Transfer Regulations & Rules of Eligibility for Players (effective from December 01, 2020). [Online] 01 12 2020. <https://handbook.fide.com/chapter/B032015>.
13. **ECF**. ECF Privacy Notice. [Online] <https://www.englishchess.org.uk/ecf-privacy-notice/>.
14. **FIDE**. FIDE Data Protection Policy. [Online] 1.0, 08 2019. <https://www.fide.com/privacy>.
15. **ECF**. Guidelines on treatment of disabled chess players. [Online] <https://www.englishchess.org.uk/guidelines-on-treatment-of-chess-players-with-impairments/>.
16. **FIDE**. E.02 Handicapped Players. Supplement to the FIDE Rules of Play Competitive games between visually handicapped and sighted players and between visually handicapped players. [Online] <https://handbook.fide.com/chapter/E02>.
17. —. C.04.1 Basic rules for Swiss Systems (effective till 30 June 2025). [Online] <https://handbook.fide.com/chapter/C0401Till2025>.

Richmond Rapidplays

Tournaments held since 1995

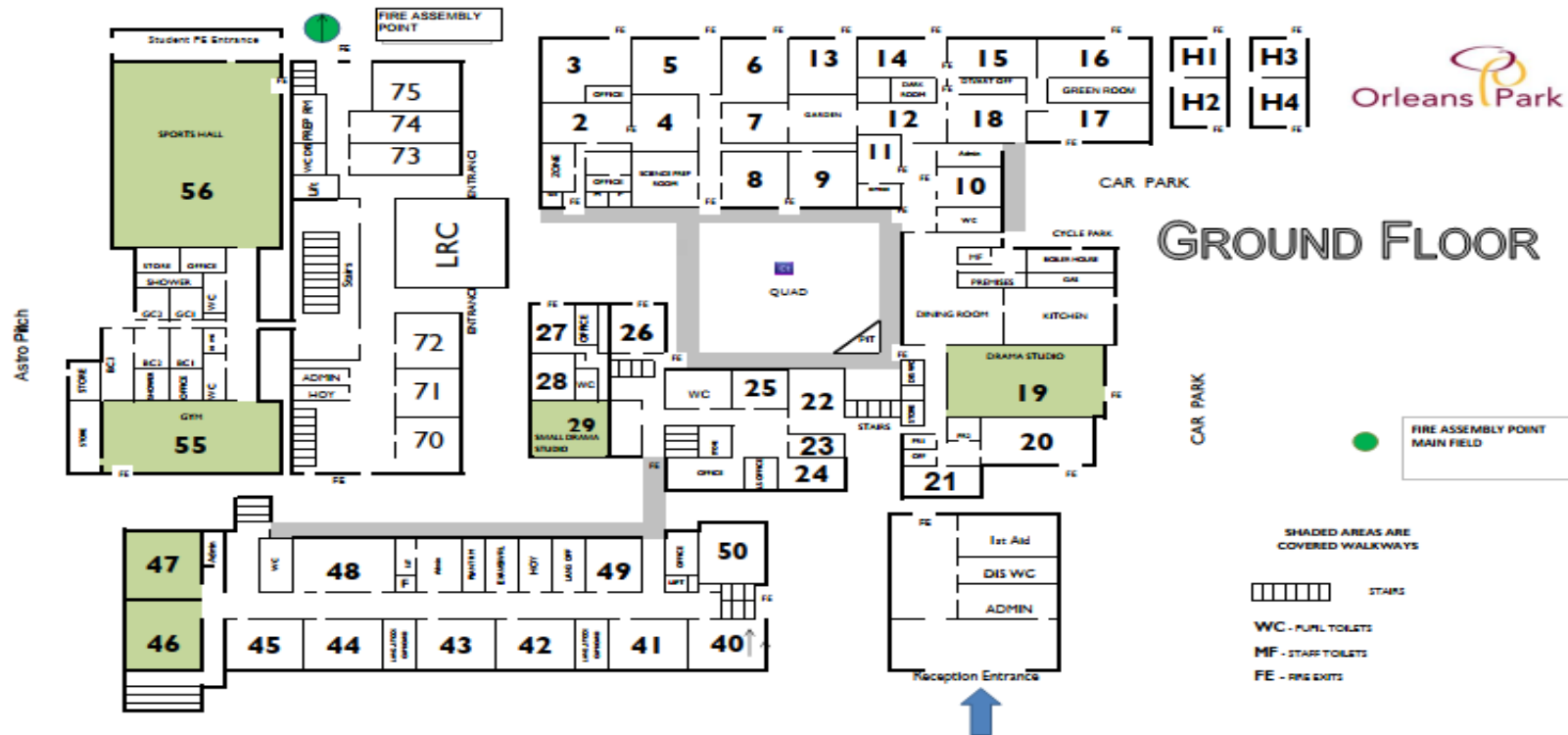
18. —. C.04.2 General handling rules for Swiss Tournaments (effective till 30 June 2025). [Online] <https://handbook.fide.com/chapter/GeneralHandlingRulesForSwissTournamentsTill2025>.
19. —. C.04.3 FIDE (Dutch) System (effective till 30 June 2025). [Online] Version approved at the 87th FIDE Congress in Baku 2016., 2016. <https://handbook.fide.com/chapter/C0403Till2025>.
20. —. C.05. Annex 1 Details of Berger Table. [Online] <https://handbook.fide.com/chapter/C05Annex1>.
21. **Herzog, Heinz**. Swiss Manager. [Online] <https://swiss-manager.at/>.
22. **Ricca, Roberto**. JaVaFo, a pairing engine for the FIDE (Dutch) System. [Online] 2.2, 15 09 2018. <http://www.rrweb.org/javafo/JaVaFo.htm>.
23. **FIDE**. C.07 FIDE Handbook / Tie-Break Regulations (effective from 1 August 2024). [Online] 2024. <https://handbook.fide.com/chapter/TieBreakRegulations082024>.
24. **ECF**. [Online] 2024. <https://www.englishchess.org.uk/wp-content/uploads/2024/11/Post-Tournament-Complaint-Form.pdf>.
25. **RJCC**. RJCC Safeguarding Policy. [Online] 1.3, 25 07 2017. <http://rjcc.org.uk/rjcc-safeguarding-policy>.
26. **ECF**. [Online] 2022. <https://www.englishchess.org.uk/wp-content/uploads/2022/07/Safeguarding-Children-Policy.pdf>.
27. **RJCC**. RJCC Anti-Bullying Policy and Procedure. [Online] 1.1, 27 07 2017. <http://rjcc.org.uk/rjccantibullying>.
28. **ECF**. [Online] [Cited: 21 12 2024.] <https://www.englishchess.org.uk/anti-bullying-policy/>.
29. **RJCC**. RJCC Complaints Procedure. [Online] 1.0B, 28 07 2017. <http://rjcc.org.uk/rjcc-complaints-procedure>.
30. —. RJCC Refunds Policy. [Online] 1.0B, 28 07 2017. <http://rjcc.org.uk/rjcc-refunds-policy>.
31. **FIDE**. FIDE Fair Play Commission - Tournament Complaint Form. [Online] 2014. <https://handbook.fide.com/files/handbook/TournamentComplaintForm.pdf>.

Richmond Rapidplays

Tournaments held since 1995

ANNEX 1: ORLEANS PARK SCHOOL – MAP

Areas in green are used as Playing Venues for Richmond Rapidplays events.



[https://d1.docs.live.net/2e5314c0275cc573/Chess Teaching/RPS/Tournament Conditions/School Floor Plan - 2021.xlsx](https://d1.docs.live.net/2e5314c0275cc573/Chess%20Teaching/RPS/Tournament%20Conditions/School%20Floor%20Plan%20-%202021.xlsx)

Conditions Applying to Tournaments Run by Richmond Rapidplays